

ALU



Slide door system
with assembled frame
AS 178HS MODERN

 **aluron**
ALUMINIUM SYSTEMS

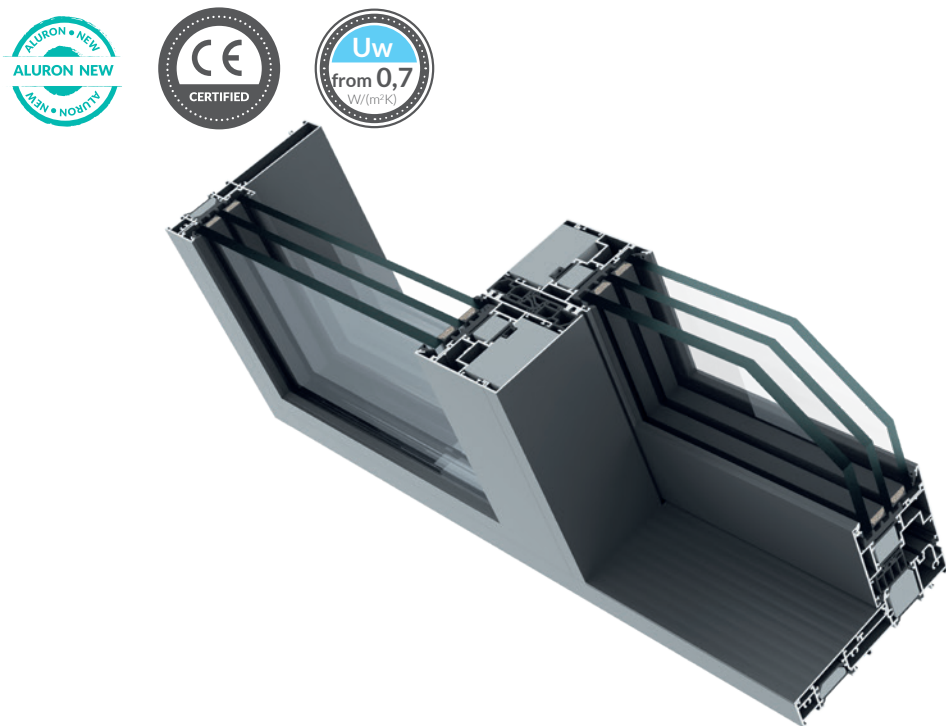
AS 178HS MODERN SYSTEM

Large-size lift-and-slide doors

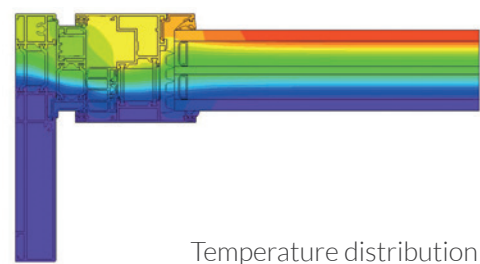
AS 178HS MODERN is a new version of the well-known and popular AS 178HS PRO SLIM system. The MODERN version focuses on simple and quick prefabrication and even better utility features, including 100% non-threshold structures.

This system is used for the execution of large-size lift-and-slide doors with thermal insulation that perfectly match the design of modern houses. The structures are executed on a MONORAIL frame providing excellent transparency of the door's fixed part.

Due to a number of facilitating solutions involved in the design, the AS 178HS MODERN system ensures quick and easy prefabrication and assembly. The number of elements needed to execute the structure was reduced by approx. 35% compared to other solutions available on the market. The use of the same sections on both sides of the structure improves material optimization. The introduction of frame profiles cut at an angle of 90° and joined with screws, allows for the frame to be transported in parts and for the structure to be assembled on site.












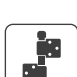

EXCELLENT THERMAL INSULATION



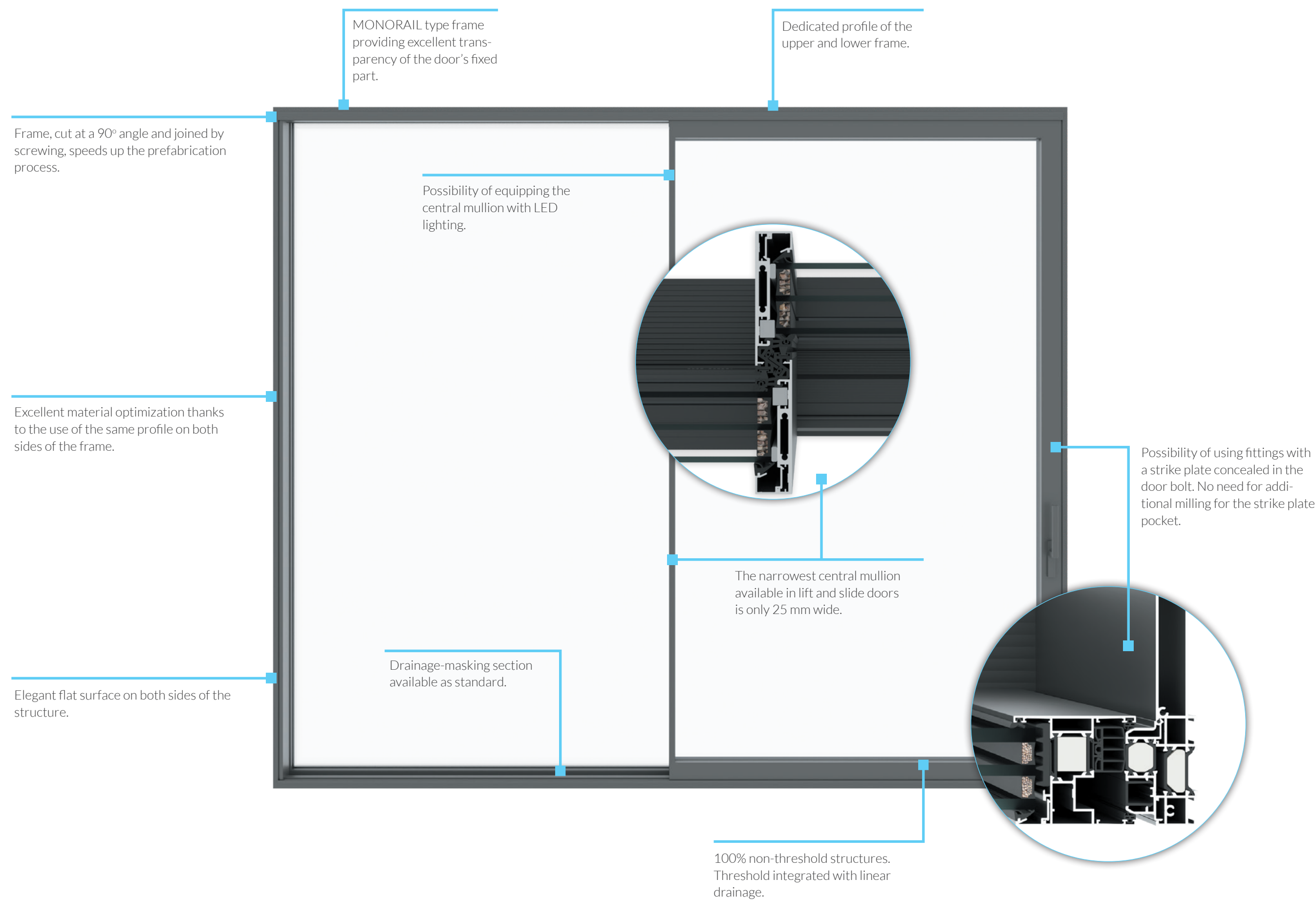
Optimal isotherm distribution.
The system's structure allows for achieving the highest thermal insulation parameters, which is an important advantage in modern energy-efficient construction.



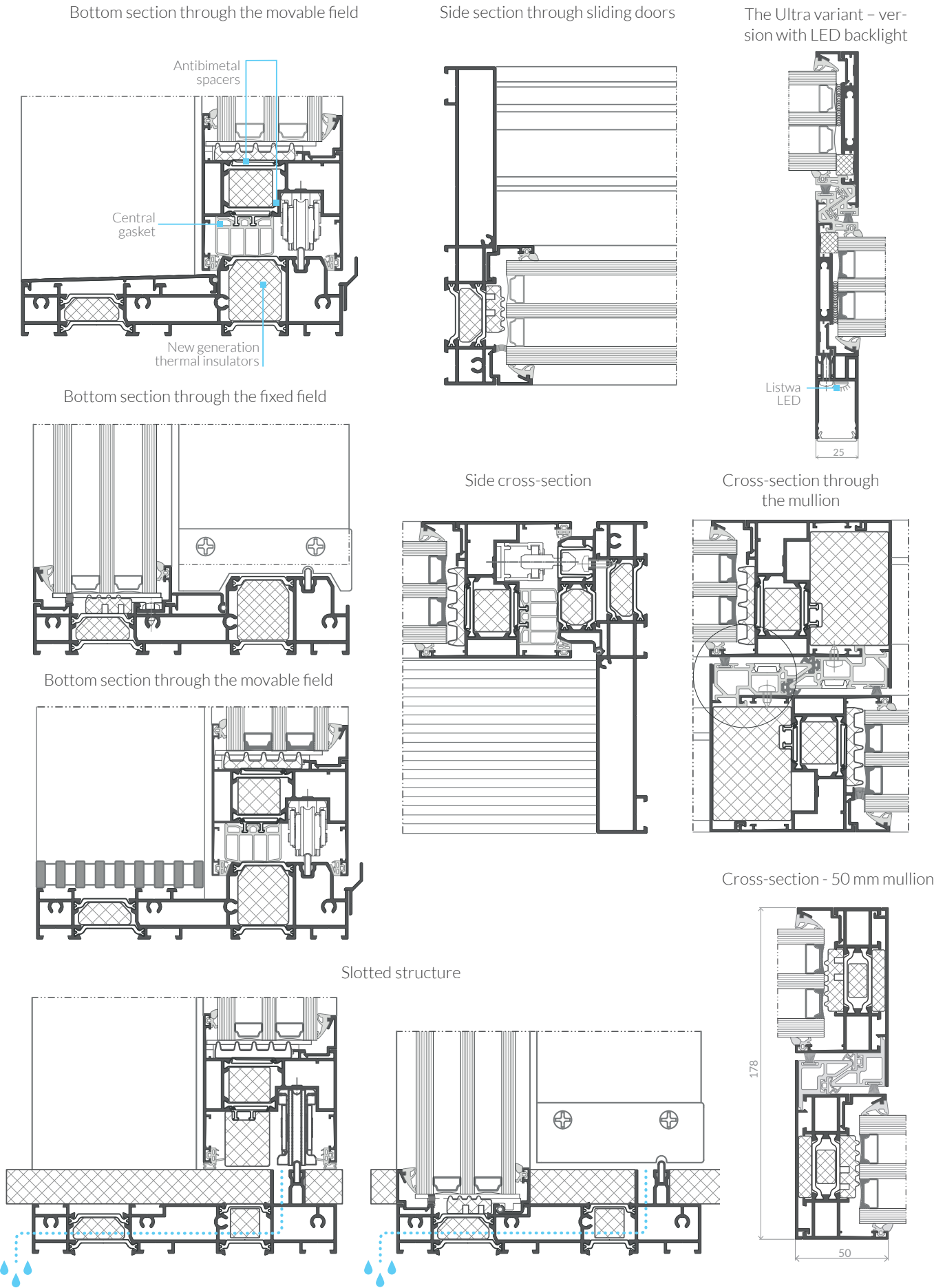
DESIGN & FUNCTIONALITY

- | | | |
|---|--|---|
|  ABCD | System is available in the following arrangements: A, C, G, K. |  Use of a acoustic seal mounted around the door perimeter. |
|  Solution available in the ULTRA variant with a 25 mm central mullion. | |  Use of a new fixed glazing clip. Elimination of the need to screw the profile to the frame. |
|  Possibility of executing all-glass internal and external corners. | |  Concealed leaf seal available as standard, without a visible plastic cap. |
|  Lack of additional masking profiles, elegant flat surface on both sides of the HS. | |  Possibility of automating the movement of the door leaf. |
|  The system is compatible with a linear drainage solution, system mosquito net, all-glass balustrade and ventilation leaf. | |  Possibility of using fittings with a strike plate concealed in the door bolt. No need for additional milling for the strike plate pocket. |
|  Possibility of concealing the frame in the insulation layer. | | |

AS 178 HS MODERN in the ULTRA variant - diagram A



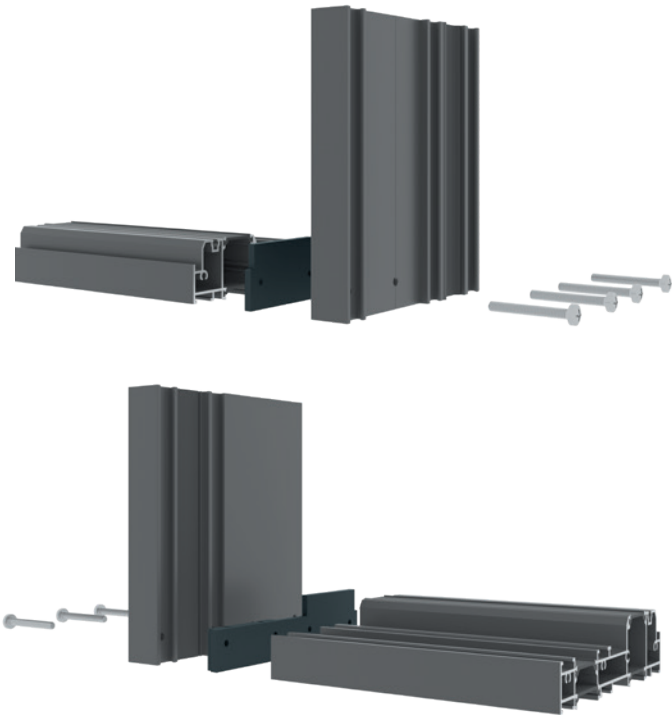
TECHNICAL DRAWINGS OF THE AS 178HS MODERN SYSTEM



FRAME PROFILES SCREW-JOINT ASSEMBLY DIAGRAM

In the AS 178HS MODERN system, the connection of the vertical frame (P3223XX) with the horizontal top frame (P3221XX) and the bottom frame (P3222XX) is carried out through crewed joints with the use of a dedicated gasket.

The frame sections are cut at an angle of 90°. Then holes are executed in the vertical frame profiles, a gasket is installed at the connection and the corner is screwed together.

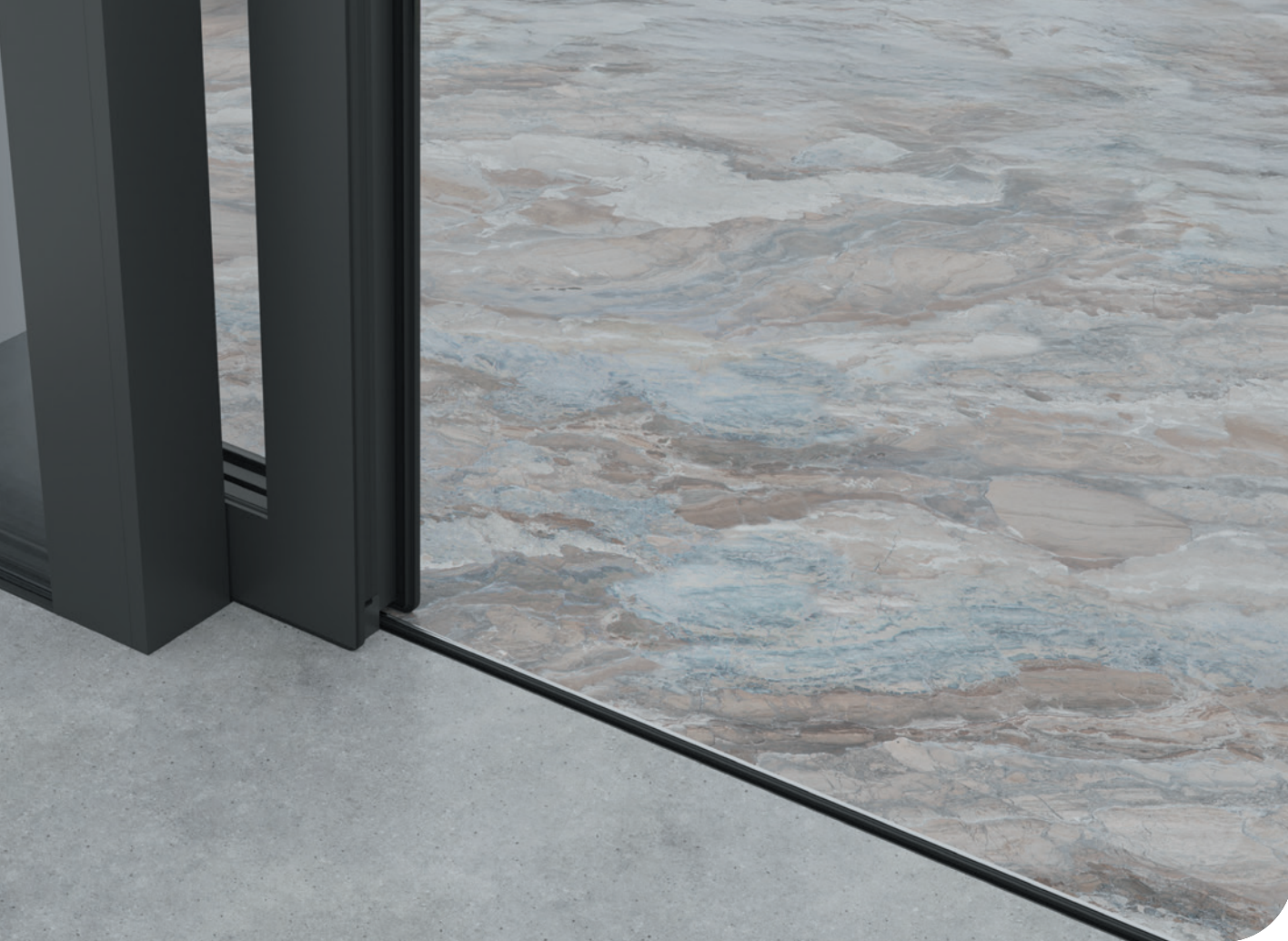


SELECTED SYSTEM PARAMETERS

from 0,7 W/m²K	Class 4	750 Pa	Class C3
Thermal insulation Uw	Air permeability	Watertightness	Wind load resistance

SYSTEM CHARACTERISTICS

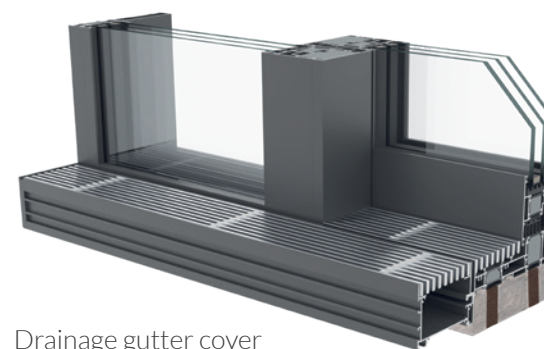
3300 mm	3300 mm	600 kg	25 mm / 50 mm	59 mm	78 mm
Max. leaf height	Max. leaf width	Max. leaf weight	Narrow mullion	Max. thickness of the glazing unit	Leaf depth



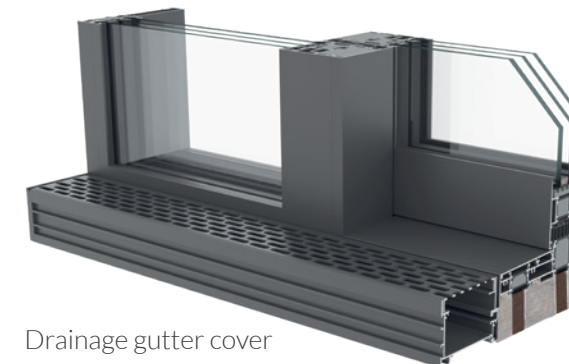
COMPLEMENTARY ELEMENTS

■ LINEAR DRAINAGE - AS LD

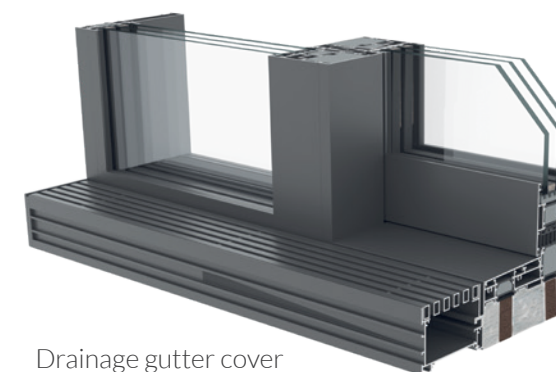
The MODERN sliding doors can be equipped with a linear drainage solution. AS LD is used to efficiently drain water from the window and door structures. The gutter, mounted at the floor level, effectively discharges both condensates generated inside the structure and those coming from the outside. The system provides for water drainage from the bottom or from the side.



Drainage gutter cover
- A079



Drainage gutter cover
- A070

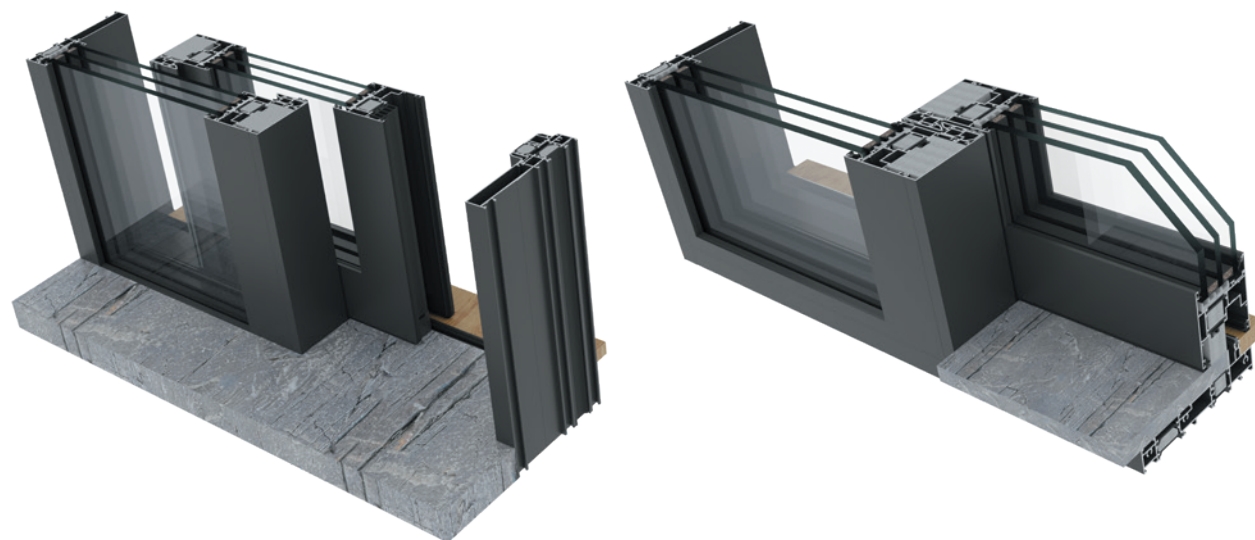


Drainage gutter cover
- A080

SLOTTED SOLUTION

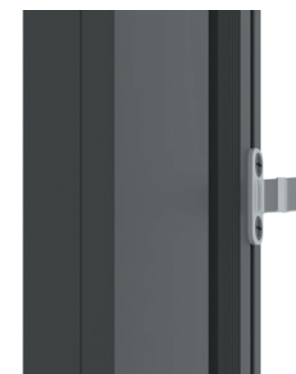
The travel mechanism and the fixed part of the structure are completely concealed in the flooring. Users can only see a small slot (width of 9 mm), which provides easy and free movement of the door leaf.

The slotted solution is a 100% non-threshold variant. Hiding all the mechanisms under the floor surface not only increases the aesthetic value, but also increases the functionality and comfort of everyday use of the surrounding space. Moreover, the slotted solution provides complete freedom of flooring arrangement at the junction between the terrace and the interior premises.



■ FITTINGS WITH STRIKE PLATE CONCEALED IN THE DOOR BOLT

The use of fittings with a strike plate concealed in the door bolt eliminates the need for additional milling for the strike plate pocket. The solution is fixed to the frame without drilling. Moreover, this type of fittings increases safety and comfort of use. Standard solutions with a protruding strike plate expose users to clothing damage or even injury.



Standard solution



New strike plate solution on the door frame side

■ CONCEALED AUTOMATION SYSTEM - DRIVE AXXENT LS

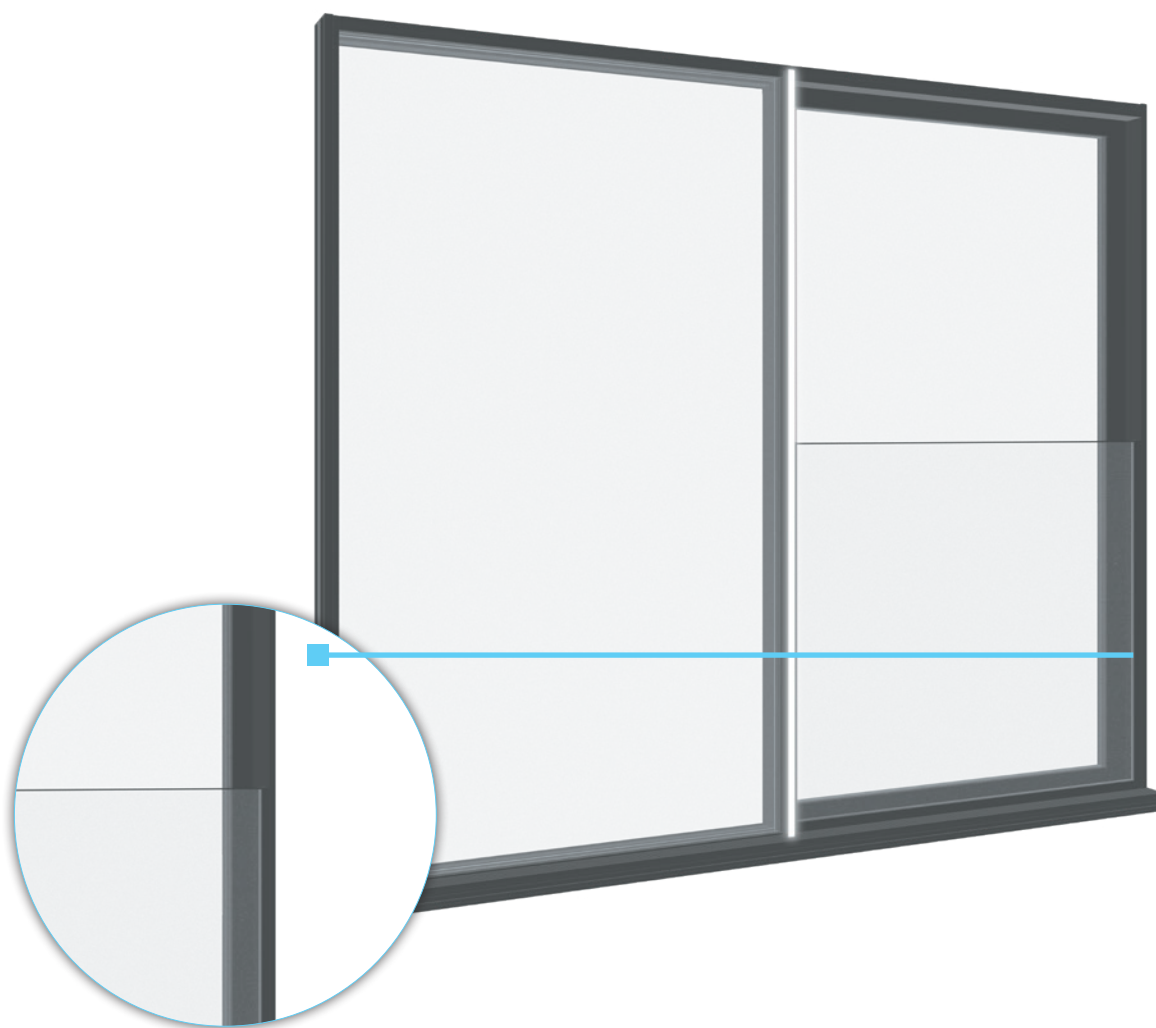
The battery-powered Siegenia drive module is invisibly integrated into the door structure. The solution does not require the use of wider frames or additional covers. The automaton provides a short, 3-second lifting cycle and quiet and smooth operation for increased comfort of use. It is characterized by ease of integration into the structure using a plug & play method.



■ ALL-GLASS BALUSTRADE AS VGB

Another optional complement to the AS 178HS MODERN system includes the AS VGB integrated glass balustrade system. This solution constitutes an extremely interesting architectural detail. In this case, however, it primarily ensures safety of use in the case of large lifting-and-sliding structures mounted on upper floors in buildings not equipped with balconies or terraces.

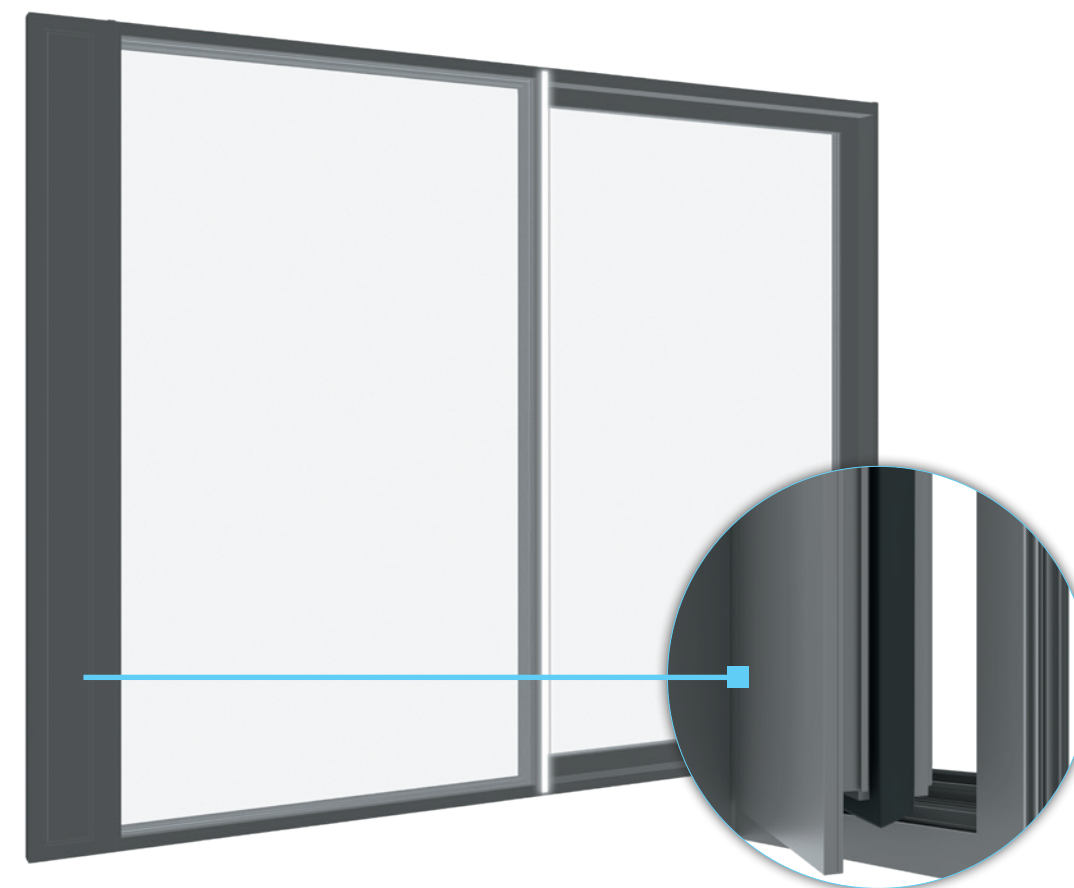
AS VGB balustrades guarantee full access of light to the rooms thanks to the use of transparent fillings made of ESG tempered laminated glass (with thickness from 10.8 mm to 20.8 mm). The structure can be complemented by an elegant handrail applied on the top edge of the glass. It is available in the powder-coated aluminum or stainless steel variants.



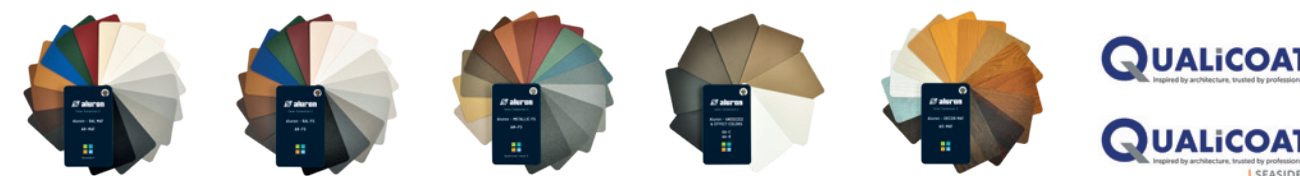
■ VENTILATION LEAF AS 75V

The use of a ventilation leaf in the lift-and-slide doors is an investment in comfort. The leaf is discreetly integrated into the door structure and does not affect its aesthetics. There are two leaf widths to choose from: 180 and 220 mm. They can be used for structures up to 3000 mm in height.

The ventilation leaf allows for air circulation even with the door closed. This is especially important during the winter season, when we want to ventilate the rooms without having to open the door. Additionally, an integrated ventilation leaf can be equipped with ACS SUN PRO system shading slats and mosquito nets. Thanks to the AS M mosquito net, the ventilation leaf prevents insects from getting inside.



MANY COLOR OPTIONS - ALURON COLOR COLLECTION 2



AR - MAT | RAL MATTE powder coating

AR - FS | RAL FS powder coating

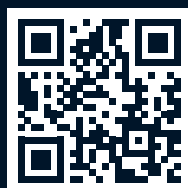
AM - FS | Metallic FS powder coating

AD - MAT | MATTE wood-like decors

ANODIZED & EFFECT COLORS | AA - C anode colors: C0, C33, C34,
AA - R anode imitation - powder coating

Dowiedz się
więcej!





Aluron K. Baran i Wspólnicy S.K.A.
42-400 Zawiercie
ul. Podmiejska 11
tel. +48 32 62 10 600
biuro@aluron.pl

